

Space City Exotics

www.spacecityexotics.shop

Sample 672-100324-396

Black Amber - THCA Hemp Flower (HYBRID)

Sample Submitted: 08-29-2025; Report Date: 09-04-2025

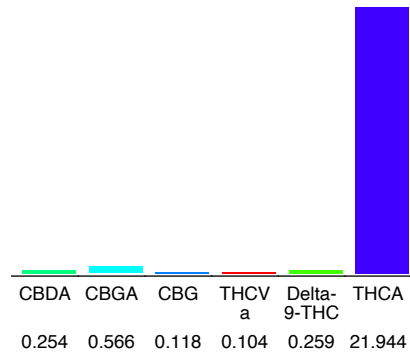
## Black Amber - THCA Hemp Flower (HYBRID)

Plant Material: Hemp Flower

### Chromatogram



### Cannabinoid Profile



### Cannabinoid Profile by HPLC

**0.26%**  
Delta-9-THC

**0.00%**  
CBD

**23.24%**  
Total Cannabinoids

Cannabinoid	% wt	mg/g
CBDA	0.254	2.54
CBGA	0.566	5.66
CBG	0.118	1.18
THCVa	0.104	1.04
Delta-9-THC	0.259	2.59
THCA	21.94	219.44
<b>Total Cannabinoids</b>	<b>23.24</b>	<b>232.5</b>
<b>Calculated Total THC</b>	<b>19.50</b>	<b>195.04</b>
<b>Calculated CBD Yield</b>	<b>0.22</b>	<b>2.23</b>

Calculated Total THC = Delta-9-THC + 0.877 \* THCA

Calculated Maximum CBD Yield = CBD + 0.877 \* CBDA

**Marin Analytics, LLC**  
 250 Bel Marin Keys Blvd, Suite D4  
 Novato, CA 94949

833-321-TEST / info@marinanalytics.com

**Mike Clemmons**  
 Lab Manager