

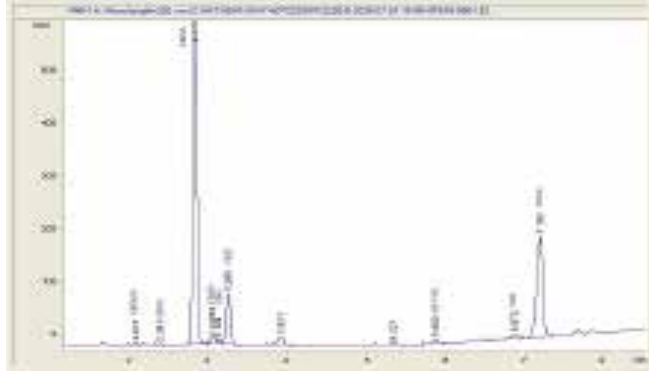
Space City Exotics
 www.spacecityexotics.shop

Sample 852-082825-183
 Blue Gummies - THCA Hemp Flower (INDICA)
 Sample Submitted: 11-02-2025; Report Date: 11-07-2025

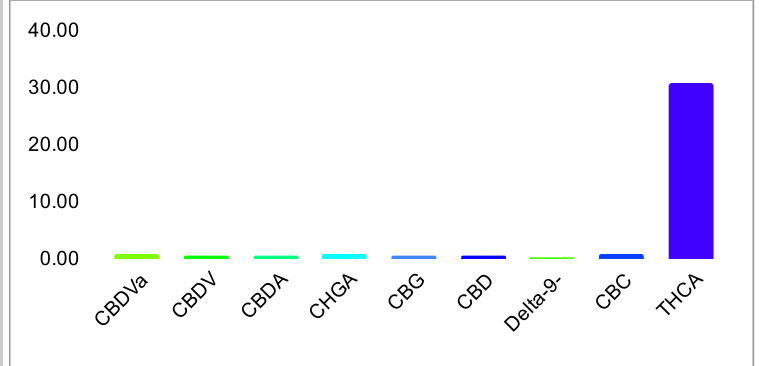
Blue Gummies - THCA Hemp Flower (INDICA)

Plant Material: Hemp Flower

Chromatogram



Cannabinoid Profile



Cannabinoid Profile by HPLC

0.28%
 Delta-9-THC

0.50%
 CBD

35.28%
 Total Cannabinoids

Cannabinoid	% wt	mg/g
CBDVa	0.75	7.5
CBDV	0.61	6.1
CBDA	0.49	4.9
CHGA	0.71	7.1
CBG	0.43	4.3
CBD	0.50	5.0
Delta-9-THC	0.28	2.8
CBC	0.81	8.1
THCA	30.70	307.0
Total Cannabinoids	35.28	352.8
Calculated Total THC	27.20	272.0
Calculated CBD Yield	0.93	9.3

Calculated Total THC = Delta-9-THC + 0.877 * THCA
 Calculated Maximum CBD Yield = CBD + 0.877 * CBDA

Marin Analytics, LLC

250 Bel Marin Keys Blvd, Suite D4
 Novato, CA 94949
 833-321-TEST / info@marinanalytics.com

Mike Clemmons
 Lab Manager

This sample has been tested by Marin Analytics, LLC using valid testing methodologies and a quality system. Values reported relate only to the sample tested. Marin Analytics, LLC makes no claims as to the efficacy, safety, or other risks associated with any detected or non-detected levels of any compounds reported herein. This Certificate shall not be reproduced except in full without the written approval of Marin Analytics, LLC. Copyright 2023 Marin Analytics, LLC All Rights Reserved.