

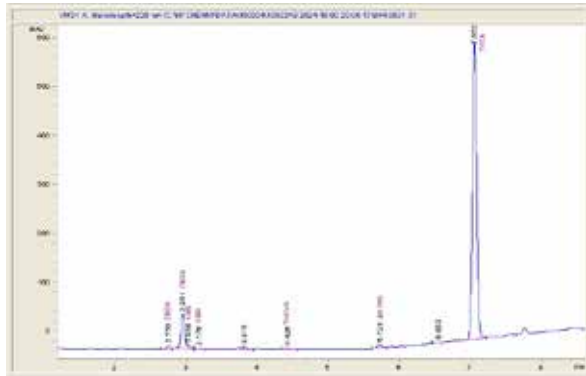
Space City Exotics  
 www.spacecityexotics.shop

Sample 901-521205-469  
 Flex Panther - THCA Hemp Flower (SATIVA)  
 Sample Submitted: 04-25-2026; Report Date: 05-01-2026

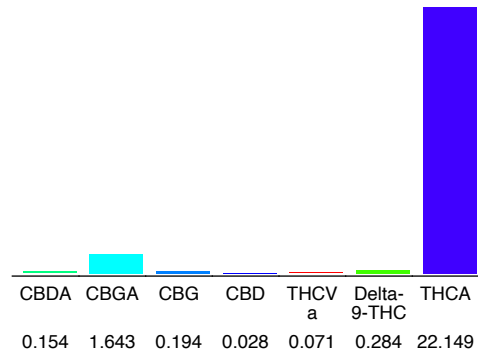
## Flex Panther - THCA Hemp Flower (SATIVA)

Plant Material: Hemp Flower

### Chromatogram



### Cannabinoid Profile



### Cannabinoid Profile by HPLC

**0.28%**  
 Delta-9-THC

**0.03%**  
 CBD

**24.52%**  
 Total Cannabinoids

| Cannabinoid                                       | % wt         | mg/g          |
|---|--------------|---------------|
| CBDA  | 0.154        | 1.54          |
| CBGA  | 1.643        | 16.43         |
| CBG   | 0.194        | 1.94          |
| CBD   | 0.028        | 0.28          |
| THCVa   | 0.071        | 0.71          |
| Delta-9-THC                                       | 0.284        | 2.84          |
| THCA  | 22.15        | 221.49        |
| <b>Total Cannabinoids</b>                         | <b>24.52</b> | <b>245.2</b>  |
| <b>Calculated Total THC</b>                       | <b>19.71</b> | <b>197.09</b> |
| <b>Calculated CBD Yield</b>                       | <b>0.16</b>  | <b>1.63</b>   |
| Calculated Total THC = Delta-9-THC + 0.877 * THCA |              |               |
| Calculated Maximum CBD Yield = CBD + 0.877 * CBDA |              |               |

**Marin Analytics, LLC**  
 250 Bel Marin Keys Blvd, Suite D4  
 Novato, CA 94949

833-321-TEST / info@marinanalytics.com

**Mike Clemmons**  
 Lab Manager