

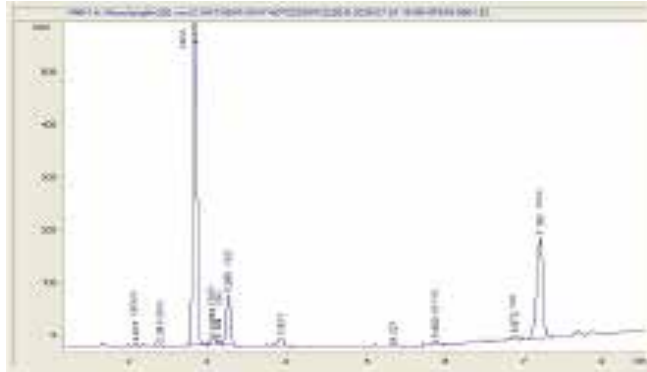
Space City Exotics
 www.spacecityexotics.shop

Sample 812-090525-270
 Zazhimi - THCA Hemp Flower (INDICA)
 Sample Submitted: 01-02-2026; Report Date: 01-15-2026

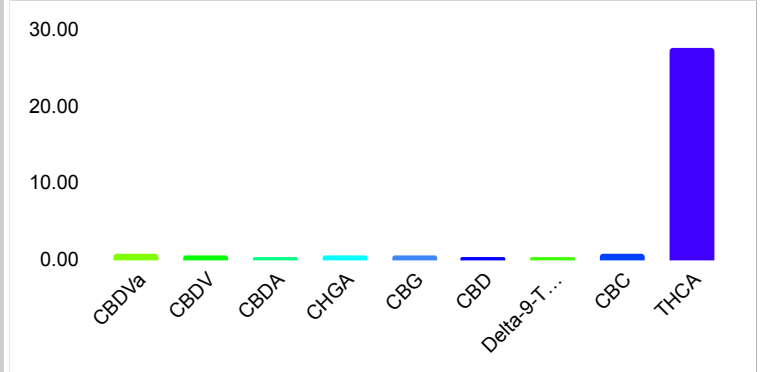
Zazhimi - THCA Hemp Flower (INDICA)

Plant Material: Hemp Flower

Chromatogram



Cannabinoid Profile



Cannabinoid Profile by HPLC

0.26%
 Delta-9-THC

0.38%
 CBD

31.92%
 Total Cannabinoids

Cannabinoid	% wt	mg/g
CBDVa	0.77	7.7
CBDV	0.52	5.2
CBDA	0.44	4.4
CHGA	0.59	5.9
CBG	0.55	5.5
CBD	0.38	3.8
Delta-9-THC	0.26	2.6
CBC	0.71	7.1
THCA	27.70	277.0

Total Cannabinoids	31.92	319.2
Calculated Total THC	24.55	245.5
Calculated CBD Yield	0.77	7.7

Calculated Total THC = Delta-9-THC + 0.877 * THCA

Calculated Maximum CBD Yield = CBD + 0.877 * CBDA

Marin Analytics, LLC

250 Bel Marin Keys Blvd, Suite D4

Novato, CA 94949

833-321-TEST / info@marinanalytics.com

Mike Clemmons

Lab Manager